



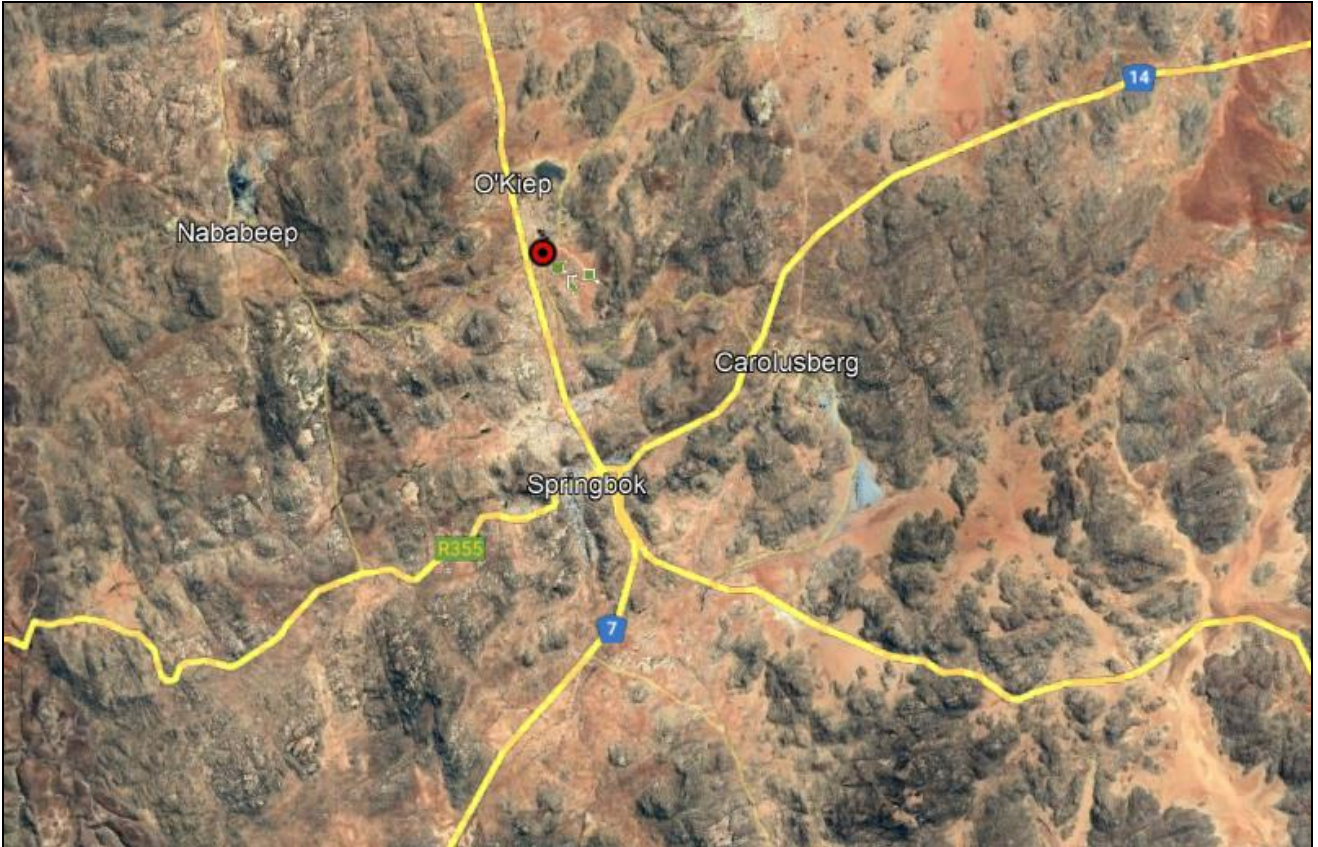
NAMA KHOI MUNICIPALITY
OKIEP ROCKY RIDGE SEWER RETICULATION
PROJECT REF NO.: BOD/NC062/23/2022-2023

C3.8: ANNEXES

NAMA KHOI MUNICIPALITY
OKIEP ROCKY RIDGE SEWER RETICULATION
PROJECT REF NO.: BOD/NC062/23/2022-2023

ANNEX A: LOCALITY PLAN

Figure 1 : Locality plan





NAMA KHOI MUNICIPALITY
OKIEP ROCKY RIDGE SEWER RETICULATION
PROJECT REF NO.: BOD/NC062/23/2022-2023

ANNEX B: STANDARD DRAWINGS

NAMA KHOI MUNICIPALITY
OKIEP ROCKY RIDGE SEWER RETICULATION
PROJECT REF NO.: BOD/NC062/23/2022-2023

ANNEX C: DRAWINGS ISSUED FOR TENDER

Drawing No.	Title
RIB-4662-1001-01	PRE DEVELOPMENT SITE PLAN
RIB-4662-1101-01	SEWER LAYOUT PLAN
RIB-4662-1101-02	SEWER LAYOUT (SHEET 1 OF 3)
RIB-4662-1101-03	SEWER LAYOUT (SHEET 2 OF 3)
RIB-4662-1101-04	SEWER LAYOUT (SHEET 2 OF 3)
RIB-4662-2001-01	SEWER SECTIONS (SHEET 1 OF 4)
RIB-4662-2001-02	SEWER SECTIONS (SHEET 2 OF 4)
RIB-4662-2001-03	SEWER SECTIONS (SHEET 3 OF 4)
RIB-4662-2001-04	SEWER SECTIONS (SHEET 4 OF 4)

NAMA KHOI MUNICIPALITY
OKIEP ROCKY RIDGE SEWER RETICULATION
PROJECT REF NO.: BOD/NC062/23/2022-2023

ANNEX D: PRE-ELIGIBILITY, QUALITY EVALUATION FORM

FUNCTIONALITY CRITERIA

- Tenders will be evaluated for quality as in the tender data clause **F2.1.1.1**
- Bidders that score less than **75 out of 100** points for the Quality criteria will be regarded as submitting a non-responsive tender and will not be evaluated further for price and preference points.
- Unclear or incomplete information provided will result in no points being allocated. **(Ensure that the stipulated information is provided. Proposed formats are provided)**
- The following criteria will be used to calculate points for the quality evaluation of tenders and bidders should ensure that they submit all relevant information needed for evaluation.

.(NB *should tables be too small for completion, make a replica, complete and staple to page where applicable and indicate on document table as “see attached”)

Table 1: Quality/Functionality Criteria

DESCRIPTION OF QUALITY CRITERIA	MAXIMUM POSSIBLE SCORE	BIDDER SCORE
Track record of bidder on similar (water or sewer, both reticulation and bulk) construction projects	35	
Demonstrated experience of key personnel	30	
Description of Plant & Equipment	20	
Bank Rating	15	
BIDDER SCORE	100	

Quality criteria are further divided as follow and points will be awarded as indicated below:

NB: SIMILAR PROJECTS MEAN SEWER AND WATER RETICULATION OR BULK PROJECTS

A. Track record of similar construction projects (35 points)

Tender evaluation points for quality in terms of the tenderer's past work experience on similar successfully completed sewer and/or water reticulation network projects. Projects will be scored based on the information supplied by the tenderer in Schedule 6 of Part T2.2: Returnable Schedules.

List of Completed Projects and completion certificates or reference letters to be appended to tender submission.

#	CRITERIA	SCORING	WEIGHT (MAX)
	TRACK RECORD OF BIDDER ON CONSTRUCTION PROJECTS OF SIMILAR NATURE		35
A.1	3 and more similar projects ≥ R5,0MIL	35	
	3 and more similar projects > R1,0MIL < R5,0MIL	30	
A.2	2 x similar projects ≥ R5,0MIL	25	
	2 x similar projects > R1,0MIL < R5,0MIL	20	
A.3	1 x similar projects ≥ R5,0MIL	15	
	1 x similar projects > R1,0MIL < R5,0MIL	10	

B. Experience and qualification of key personnel (max 30 points)

Tender evaluation points for quality in terms of demonstrated experience and qualification of key personnel to be directly involved with this contract (if awarded) will be scored based on the information supplied by the tenderer in Schedule 7 of Part T2.2: Returnable Schedules.

The Tenderer must have the key personnel in his permanent employment. Proof of Qualifications of key permanent personnel must be provided in order to be evaluated for Quality.

#	CRITERIA	SCORING	WEIGHT (MAX)
	CONTRACTS MANAGER		15
B.1	B. Eng: Civil Engineering	15	
B.2	B. Tech: Civil Engineering	13	
B.3	N. Dip: Civil Engineering	10	
	SITE AGENT		10
B.4	Project experience on similar projects ≥ R5,0 MIL	10	
B.5	Project experience on similar projects > R1,0MIL < R5,0MIL	5	
	GENERAL FOREMAN		5
B.6	Project experience on similar projects ≥R5,0 MIL	5	
B.7	Project experience on similar projects > R1,0MIL < R5,0MIL	3	

C. Description of Plant & Equipment (Max 20 points)

Tender evaluation points for quality in Plant and Equipment will be scored based on the information supplied by the tenderer in Schedule 5 of Part T2.2: Returnable Schedules.

Proof of ownership must be provided. Plant and equipment may also be rented but proof must be provided from the Service Providers that plant and equipment shall be rented to the Bidder for the duration of the project.

#	CRITERIA	SCORING	WEIGHT (MAX)
PLANT			14
C.1	Excavator (20T)	5	
C.2	TLB	4	
C.3	LDV (Bakkies)	2	
C.4	Tippers (6m ³ min)	3	
EQUIPMENT			6
C.5	Bomag walk behind Roller (580kg)	1	
C.6	Rammer Compactor (70kg)	1	
C.7	Plate compactor (17,kN /or 330 x 635mm Base)	1	
C.8	Generators 5.5 kVA	1	
C.9	Angle Grinder (230mm)	1	
C.10	Industrial Hand drill (SDS +780W)	1	

D. Bank Rating (Max 15 points)

Tender evaluation points for quality for Bank Rating will be scored based on the information supplied by the tenderer in Schedule 19 of Part T2.2: Returnable Schedules.

#	CRITERIA	SCORING	WEIGHT (MAX)
BANK RATING			15
D.1	'D' or lower bank rating	0	
D.2	'C' or lower bank rating	5	
D.3	'B' or lower bank rating	10	
D.4	'A' or lower bank rating	15	

TENDER EVALUATION OF TENDER

Tenderer:

Evaluator:.....

1. ELIGIBILITY CRITERIA

1.1. Completion of forms

Form	Reference Page	YES	NO	Comment
Schedule 1				
Schedule 2				
Schedule 3				
Schedule 4				
Schedule 5				
Schedule 6				
Schedule 7				
Schedule 8				
Schedule 9				
Schedule 10				
Schedule 11				
Schedule 12				
Schedule 13				
Schedule 14				
Schedule 15				
Schedule 16				
Schedule 17				
Schedule 18				
Schedule 19				
Schedule 20				
Schedule 21				
Schedule 22				
Schedule 23				
Schedule 24				
Form of Offer and Acceptance completed in full				
Contract Data (Part 2)				
Performance of Guarantee				
Occupational Health and Safety Agreement				
Bills of Quantities				



I hereby declare that the tenderer:

IS ELIGIBLE / NOT ELIGIBLE for further consideration.

Reasons if not eligible:

.....
.....
.....

Signed by evaluator Date



NAMA KHOI MUNICIPALITY
OKIEP ROCKY RIDGE SEWER RETICULATION
PROJECT REF NO.: BOD/NC062/23/2022-2023

ANNEX E: EPWP CONTRACT OF EMPLOYMENT